



ENGINE DRIVE DISTRIBUTOR CATALOGUE



*Support
Australian-made.*

PENTAIR.COM.AU

ENGINE DRIVE

CONTENTS

BENEFITS - NOMENCLATURE	3
OVERVIEW - BLAZEMASTER	
SINGLE - B55H / B65H / B55BS / B65BS	4
TWIN - BM55H / BM65H / BM55BS / BM65BS / BM10BS	5
DIESEL - B48Y / B48YE / B70Y / B10YE / BM70Y / BM10YE	6
OVERVIEW - TORRENTMASTER	
OTM1000 / OTM1000E	6
OVERVIEW - CHEMICAL TRANSFER	
HTP750VR / HTP1600V	7
OVERVIEW - MINIBLAZE	
MB25L / MB25LK	8
OVERVIEW - JET ASSISTED	
OJ700E / OJ800E / OJ800ES	8
SELECT CONVERTIBLE JET PUMPS	9
PERFORMANCE TABLES - ENGINEMASTER JET ASSISTED	
OJ700 / OJ800 - SHALLOW WELL	10
OJ700 / OJ800 - DEEP WELL	11
TECHNICAL DATA - ALL BLAZEMASTER MODELS	
MATERIALS OF CONSTRUCTION	12
SINGLE STAGE	12
TWIN STAGE	12
TECHNICAL DATA - ALL WATER TRANSFER MODELS	
MATERIALS OF CONSTRUCTION	13
TORRENTMASTER / HTP750VR / HTP1600V / MB25L / JET ASSISTED	13
DIMENSIONS - ALL MODELS	
BLAZEMASTER SINGLE / TWIN - DRAWINGS	14
TORRENTMASTER - DRAWINGS	15
HTP750 / HTP1600V - DRAWINGS	16
MB25L / OJ700E / OJ800E - DRAWINGS	17
SPARE PARTS	
BLAZEMASTER SINGLE	18
BLAZEMASTER TWIN	19
TORRENTMASTER	20
HTP750VR	21
HTP1600V	22
MB25L	23
OJ SERIES	24



ENGINE DRIVE

BENEFITS - NOMENCLATURE

Onga offers a wide range of Engine Drive pumps to provide the best possible solution to a range of needs in areas inaccessible to power. Like Onga pumps, Honda, Briggs & Stratton (petrol engines) and Yanmar (diesel engine) have great reputations for performance and reliability.

Blazemaster Single stage

The Blazemaster single stage pumps are designed specifically to move more water, economically. They are an ideal all purpose, hardworking pump for a range of applications.

Blazemaster Twin stage

The Blazemaster twin stage pumps provide higher pressure, allowing you to fight fires from a safer distance.

Farmmaster pumps

Onga has also coupled engines to the legendary farmmaster pumps, while using shallow or deep well injectors these pumps can be adapted to almost any job, and deliver water where and when you need it. Often getting power to a site near a bore, creek, river or dam is difficult or even impossible.

Miniblaze

The Miniblaze single impeller pump is perfect in situations where there is isolation from electricity preventing electric powered pumps being used. The versatility of the Miniblaze is endless, from fighting ember attacks to use as a tool for the handyman, stock watering, ute pack and spray units, as well as evacuating water from work sites.

Hypro Transfer Pumps

The HTP750VR is a versatile, economic, water and chemical transfer pump powered by a reliable Honda 6.5 hp engine. The pump casing is manufactured from polypropylene with 2" suction and discharge ports providing high volume capacity.

The HTP1600V 3" Hypro self-priming polypropylene transfer pump handles large, high capacity, liquid transfer jobs with ease. Coupled to a 13hp Honda petrol engine, the HTP1600V is capable of delivering maximum flowrate of up to 1600 lpm. Use them for transferring water, liquid fertilizers and other chemicals compatible with pump materials.

TorrentMaster

The OTM1000 moves large volumes of water at lower pressures. It is coupled with a Honda 6.5HP engine, cast-iron, abrasion resistant impeller, built-in non-return valve, quick-fill priming port for easy priming and is ideal for water cartage.



MADE IN AUSTRALIA...

The Australian Made logo for the production of our Blazemaster wet-ends. Sourced and assembled in our Dandenong facility, you can expect quality and reliability.

The Engine Drive range is available in a wide range of petrol, diesel, recoil and electric start models.

POWERED by
HONDA



YANMAR

RANGE	NORMAL ENGINE SIZE	ENGINE MANUFACTURER	FEATURES
B - BLAZEMASTER	55 - 5.5HP	H - HONDA	E - ELECTRIC START
BM - BLAZEMASTER TWIN	65 - 6.5HP	BS - BRIGGS & STRATTON	R - ROLL FRAME
	90 - 9.0HP	Y - YANMAR	
	10 - 10.0HP		
	48 - 4.8HP		
	70 - 7.0HP		



BLAZEMASTER SINGLE

B55H, B65H, B55BS & B65BS

B55H & B65H



B55BS & B65BS



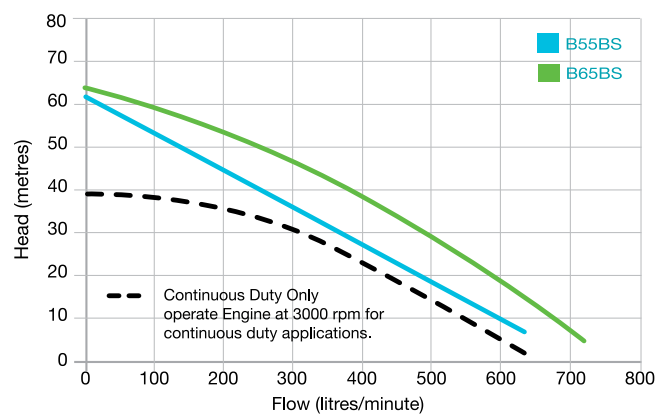
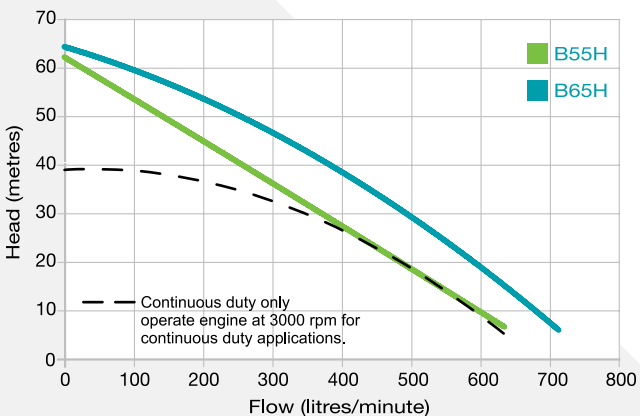
- The Blazemaster single-stage pumps are designed to move more water, more economically
- Large pump casing with raised suction port and inbuilt non-return valve for better priming capabilities
- Honda GX Series engines have long been recognised as the industry leader in providing reliable, easy-starting and fuel efficient small engines
- Briggs and Stratton Intek™ I/C race-bred series engine for reliability, durability and performance
- ‘Run sense’ low oil protection to protect the engine from low oil failures and engine damage



FEATURES	BENEFITS
Large pump body with raised suction port	Better priming capability
Large diameter impeller	Higher discharge head
CFD (Computational Fluid Dynamics) designed hydraulic components	Higher performance and efficiency
FEA (Finite Element Analysis) designed pump components	Higher strength with low weight
Inbuilt non-return valve	Assists priming performance
Easy access to non-return valve	Quicker installation and service
Large diameter priming ports	Fast and easy priming set-up
Large raised handle / or roll frame	Better ergonomics
Cast aluminium construction	Strength, durability and lightweight portability

APPLICATIONS

Firefighting, tank filling, water transfer, boom spraying and irrigation.



BLAZEMASTER TWIN

BM55H, BM65H, BM55BS, BM65BS & BM10BS

BM55H & BM65H



POWERED by
HONDA

BM55BS, BM65BS & BM10BS



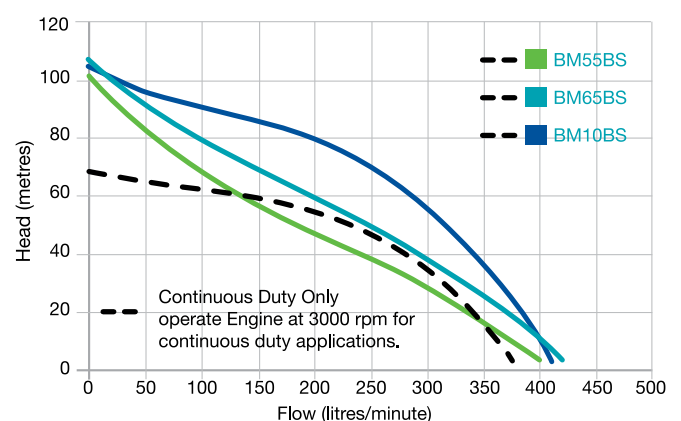
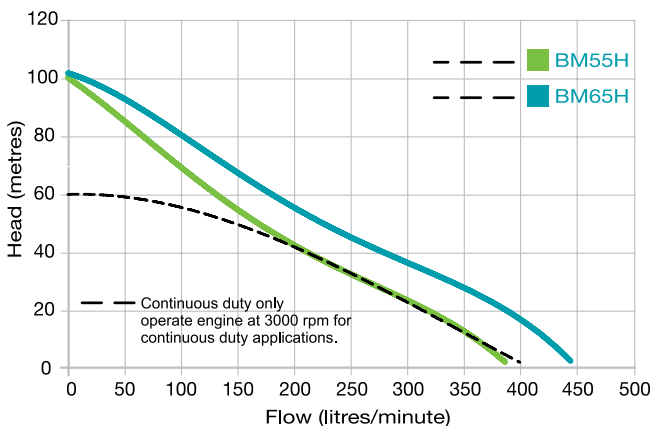
- The Blazemaster twin series are dual-impeller pumps designed to give you higher pressure from a safer distance
- Cast aluminium construction means strength, durability and lightweight portability
- Larger diameter impellers delivering higher discharge head
- CFD designed hydraulic components means higher performance and efficiency
- Honda GX Series engines have long been recognized as the industry leader in providing reliable, easy-starting and fuel efficient small engines
- Briggs and Stratton Intek™ I/C race-bred series engine for reliability, durability and performance



FEATURES	BENEFITS
Large pump body with raised suction port	Better priming capability
Twin impellers	Higher discharge head
CFD designed hydraulic components	Higher performance and efficiency
FEA* designed pump components	Higher strength with low weight
Inbuilt non-return valve	Assists priming performance
Easy access to non-return valve	Quicker installation and service
Large diameter priming ports	Fast and easy priming set-up
Large raised handle	Better ergonomics
Cast aluminium construction	Strength, durability and lightweight portability

APPLICATIONS

Firefighting, tank filling, water transfer, boom spraying, irrigation.



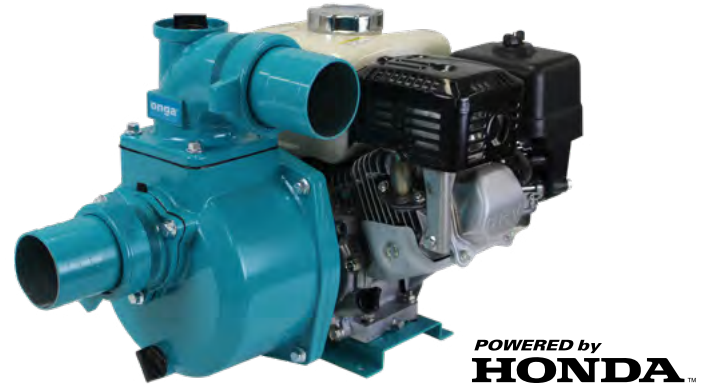
BLAZEMASTER DIESEL

B48Y, B48YE, B70Y, B10YE & BM70Y, BM10YE



TORRENTMASTER

OTM1000 & OTM1000E

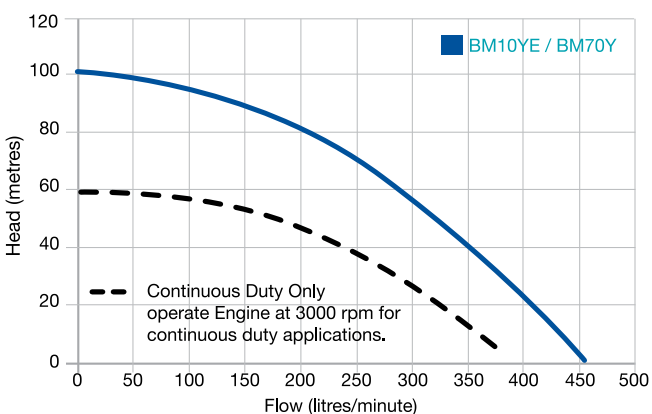
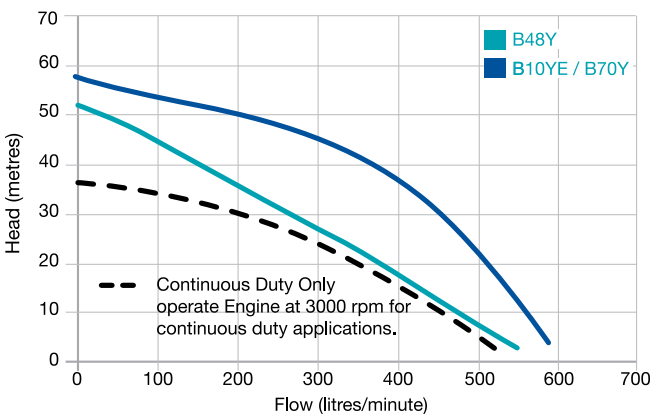


KEY FEATURES

- Available in single and twin stage configurations
- Large pump casing with raised suction port and inbuilt non-return valve for better priming capabilities
- Compact, direct injection technology
- Strong, sturdy and made to last

APPLICATIONS

Firefighting, tank filling, high flow water transfer, boom spraying and irrigation.

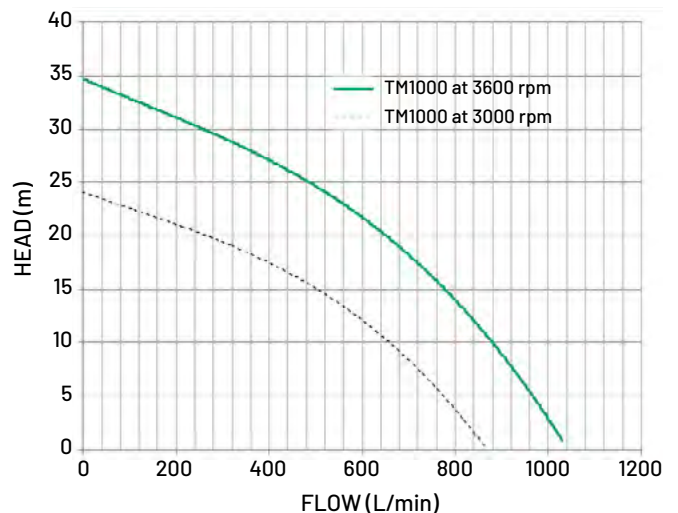


KEY FEATURES

- 3" inlet and outlet for high flow rates
- Robust aluminium casing for lightweight high grade corrosion resistance
- Aluminium nut and tail fittings
- Cast iron open style impeller
- Strong and durable construction
- Free passage of 15mm
- Rotatable discharge port makes the unit adaptable to various applications
- Built-in non-return valve aids quick priming
- Max. head - 35m and max. flow - 1000lpm

APPLICATIONS

Flood water evacuation and high flow water transfer.



CHEMICAL TRANSFER PUMPS

HTP750VR

HTP1600V



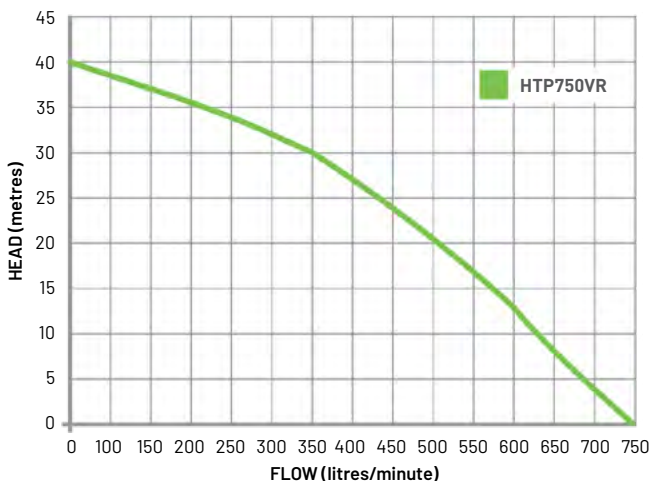
KEY FEATURES

- 2" connections for high volume capacity
- Polypropylene housing for corrosive chemical handling*
- Quick connect camlock fittings supplied
- High strength nylon impeller
- Handles solid particles in suspension up to 20mm
- Viton mechanical seal and inlet valve for reliability and longevity
- Roll frame fitted for stability and ease of transporting
- Honda GX200 engine
- Max. head - 40m and max. flow - 750lpm

APPLICATIONS

Liquid fertiliser and chemical transfer, irrigation, tank filling and flood water removal.

* check chemical compatibility



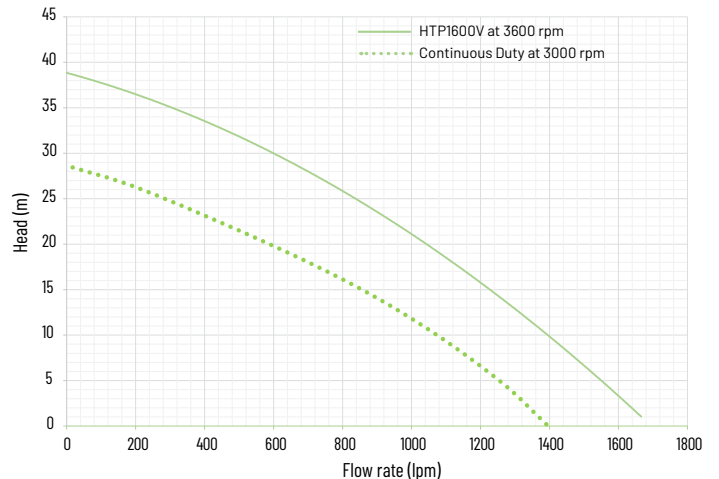
KEY FEATURES

- 3" connections for high volume capacity
- Polypropylene housing for corrosive chemical handling*
- Pump delivering highest flow rate in the market of up to 1600lpm
- Quick connect camlock fittings supplied
- High strength nylon impeller
- Handles solid particles in suspension up to 20mm
- Viton mechanical seal and inlet valve for reliability and longevity
- Honda GX390 engine
- Max. head - 38m and max. flow - 1600lpm

APPLICATIONS

Liquid fertiliser and chemical transfer, irrigation, tank filling and flood water removal.

* check chemical compatibility



MINIBLAZE

MB25L & MB25LK

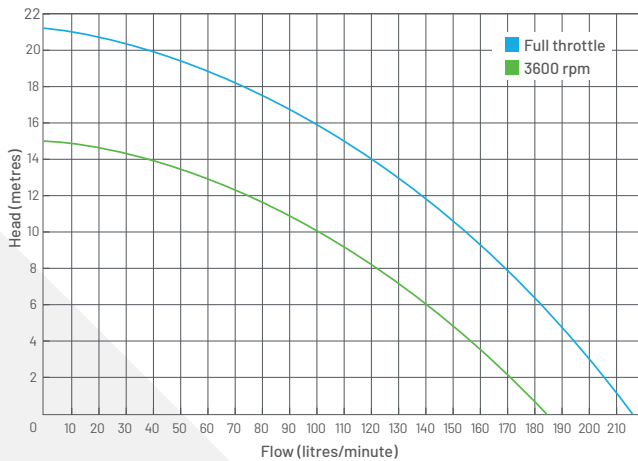


KEY FEATURES

- Miniblaze is perfect in situations where there is isolation from electrical power source
- Lightweight, efficient & versatile
- Reliable 2.5HP engine
- Strong and durable construction
- Available as a standalone unit or a kit
- Max. head - 21m and max. flow - 215lpm

APPLICATIONS

Evacuate water from worksites, remote stock watering, dust and ember suppression.



JET ASSISTED

OJ700E, OJ800E & OJ800ES



When your property needs a serious jet-assisted pump independent of electrical supply, only cast iron is good enough. Other materials just won't stand up to the extreme pressures common in engine driven jet assisted pumps. Combining the best jet pumps available with the most reliable engines results in the Onga OJ700E and OJ800E.

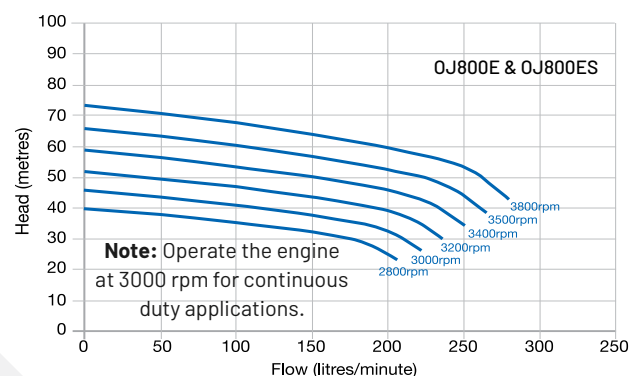
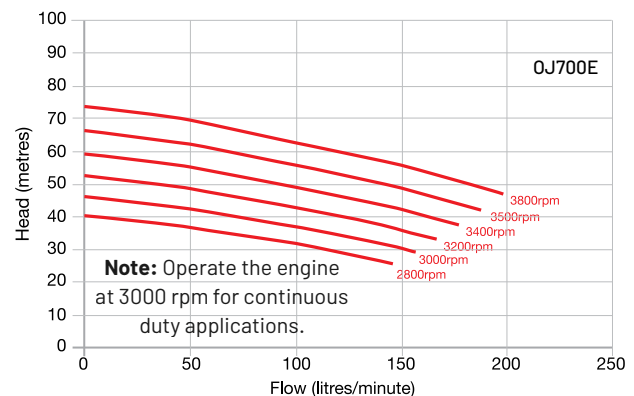
The OJ-E series gives you the flexibility to draw water from almost any source and location. You can rest assured that if your water supply changes, your OJ can change along with it – with over 40 injector combinations for the Onga Farmmaster range, there's a set-up to suit almost any application.

KEY FEATURES:

- Cast iron, heavy duty construction
- Available with Honda petrol or Yanmar diesel engine
- Available in shallow well or deep well configuration, with over 25 injector combinations

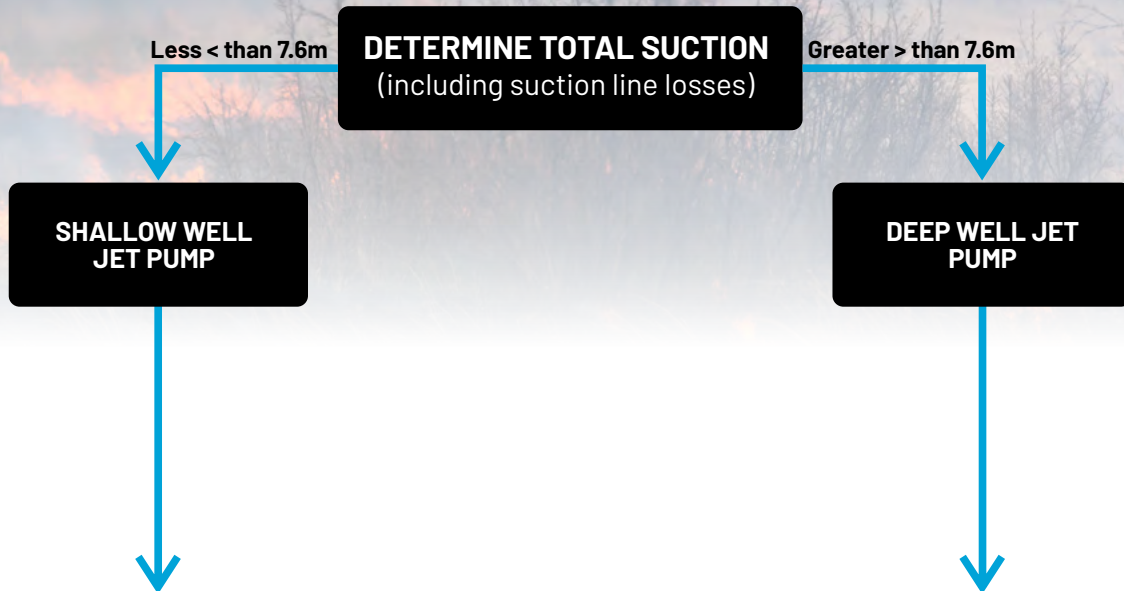
APPLICATIONS

High suction lifts from dams, bores and rivers. Water transfer, stock watering, tank filling and irrigation where high suction lifts are required.



HOW TO SELECT CONVERTIBLE JET PUMPS

ENGINE DRIVEN WATER TRANSFER SYSTEMS



SHALLOW WELL

Site specific information required

- Water depth. This added to friction losses through footvalve and suction line give total suction head (0-7.6m)
- Discharge head pressure required (m or kPa) - This includes pressure required by the application, friction loss from delivery to usage points, and height differences
- Volume required (l/m)

Using the shallow well jet pump selection table select the pump and injector combination that delivers the right flow at the design suction and delivery heads.

Install the pump with foot valve or check valve, suction line, injector and pressure tank. Adjust the pressure switch to suit the application and injector fitted.

DEEP WELL

Site specific information required

- Water depth. Suction pipe sizes are given for each injector, and performance shown in the tables takes this friction loss into account
- Discharge head pressure required (m or kPa) - This includes pressure required by the application, friction loss from delivery to usage points, and height differences
- Total delivery head must be converted to kPa

Deep Well Jet Pumps are more suitable than submersible pumps where the following conditions may exist; depths down to 49 metres, corrosive water, sandy water, low or variable flow rates.

Using the deep well jet pump selection table, select the pump and injector combination that delivers the right flow at the design suction and delivery heads. The operating pressure must be maintained above the minimum injector pressure.

Install the pump and injector using correctly sized pipes. The injector must be installed at least 3m below water level. Adjust the pressure switch to suit the application and injector fitted. Adjust the gate valve to ensure that minimum operating pressure is maintained.

ENGINEMASTER JET ASSISTED

PERFORMANCE TABLES

OJ700 - SHALLOW WELL

INJECTOR MODEL	PRESSURE SWITCH SETTING (KPA)	SUCTION LIFT (M)	DISCHARGE HEAD (M)													MAX. PUMP PRESSURE (KPA)		
			15	21	27	34	40	46	52	58	64	70	76	82	88		95	
			CAPACITY (LPM)															
S700*	210-350#	0	162	159	138	80	27											430
		3	130	127	110	64												400
		6	92	91	79	46												370
		7.6	65	64	55	32												355
S701*	280-455	0			114	94	61	31										540
		3			91	75	49	25										510
		6			65	54	35	18										480
		7.6			46	38	24	12										465
S702*	350-560	0				85	66	42	24									635
		3				68	53	34	19									605
		6				48	38	24	14									575
		7.6				34	26	17	10									560
S703**	420-630	0					69	50	35	22								690
		3					55	40	28	18								660
		6					39	29	20	13								630
		7.6					28	20	14	9								615
S704**	490-700	0					56	51	39	28	18	11						800
		3					45	41	31	22	14	9						770
		6					32	29	22	16	10							740
		7.6					22	20	16	11	7							725

All performances are at 2850RPM

Pump suction 1 1/2" BSP Female

Pump discharge port 1" BSP Male (pump), 1" BSP Female (pressure kit)

Both single and three phase models available

OJ800 - SHALLOW WELL

INJECTOR MODEL	PRESSURE SWITCH SETTING (KPA)	SUCTION LIFT (M)	DISCHARGE HEAD (M)													MAX. PUMP PRESSURE (KPA)		
			15	21	27	34	40	46	52	58	64	70	76	82	88		95	
			CAPACITY (LPM)															
S800*	210-350#	0	245	241	218	156	72											430
		3	196	193	174	125												400
		6	140	137	124	89												370
		7.6	98	96	87	62												355
S801*	280-455	0		215	204	160	116	66										525
		3		172	163	128	93	53										495
		6		123	116	91	66											465
		7.6		86	82	64	46											450
S802*	350-560	0			154	150	117	85	54	25								635
		3			123	120	94	68	43	20								605
		6			88	86	67	48	31									575
		7.6			62	60	47	34	22									560
S803*	420-630	0					112	88	64	42	25							730
		3					90	70	51	34	20							700
		6					64	50	36	24	14							670
		7.6					45	35	26	17	10							655
S804**	490-700	0						90	67	47	31	18						800
		3						72	54	38	24	14						770
		6						51	38	27	18	10						740
		7.6						36	27	19	12	7						725
S805**	630-840	0							70	57	43	31						970
		3							56	46	34	25	17					880
		6							40	32	25	18	12					850
		7.6							28	23	17	12	8					835
S806**	770-1050	0										34	33	30	25	18		1145
		3										27	26	24	20	14		1115
		6										19	18	17	14	10		1085
		7.6										14	13	12	10	7		1070

All performances are at 2850RPM

Pump suction 1 1/2" BSP Female

Pump discharge port 1" BSP Female (pump), 1" BSP Female (pressure kit)

Both single and three phase models available

TECHNICAL ENGINE DRIVE

BLAZEMASTER

MATERIALS OF CONSTRUCTION

COMPONENT	MODEL
	BLAZEMASTER SERIES
PUMP CASING	POWDER COATED ALUMINIUM
IMPELLER (S)	30% GLASS FILLED NYLON
DIFFUSER	ALUMINIUM
MOTOR SHAFT	MILD STEEL
O-RING	NITRILE
MECHANICAL SEAL	CARBON / CERAMIC
NUTS & TAILS	POLYPROPYLENE

TECHNICAL DATA - BLAZEMASTER SINGLE STAGE

MODEL	HP NOMINAL	ENGINE MODEL	SUCTION	DISCHARGE	OPTIONS
HONDA					
B55H	5.5	GX160	1.5"	1", 1", 1.5"	B - R
B65H	6.5	GX200	2.0"	1", 1", 2"	ES - R
BRIGGS & STRATTON					
B55BS	5	INTEK 163CC	1.5"	1", 1", 1.5"	RF
B65BS	6	130G 208CC	2"	1", 1", 2"	ES
YANMAR					
B48Y	4.8	L48AE	1.5"	1", 1", 1.5"	ES
B70YE	7	L70AE	2.0"	1", 1", 2"	R
B10YE	10	L100AE	2.0"	1", 1", 2"	R

TECHNICAL DATA - BLAZEMASTER TWIN STAGE

MODEL	HP NOMINAL	ENGINE MODEL	SUCTION	DISCHARGE	OPTIONS
HONDA					
BM55H	5.5	GX160	1.5"	1", 1", 1.5"	R
BM65H	6.5	GX200	2.0"	1", 1", 2"	ES - R
BM90H	9	GX270	2.0"	1", 1", 2"	ES
BRIGGS & STRATTON					
BM55BS	5	INTEK 163CC	1.5"	1", 1", 1.5"	RF
BM65BS	6	130G 208CC	2"	1", 1", 2"	ES - R
BM10BSE	10	305CC VANGUARD ELECTRIC START	2"	1", 1", 2"	-
YANMAR					
BM70YE	7	L70AE	2.0"	1", 1", 2"	R
BM10YE	10	L100AE	2.0"	1", 1", 2"	R

*OPTIONAL EXTRAS: **ES** - Electric start **R** - Roll frame

TECHNICAL ENGINE DRIVE

WATER TRANSFER

MATERIALS OF CONSTRUCTION

COMPONENT	MODEL			
	TORRENTMASTER	HTP	MINIBLAZE	OJ
PUMP CASING	POWDER COATED ALUMINIUM	POLYPROPYLENE	POWDER COATED ALUMINIUM	COATED CAST IRON
IMPELLER(S)	CAST IRON	GF NYLON	30% GF NYLON	POLYCARB. 20% GLASS FILLED
DIFFUSER	CAST IRON	GF NYLON	ALUMINIUM	NORYL
MOTOR SHAFT	MILD STEEL	MILD STEEL	MILD STEEL	MILD STEEL
O-RING	NITRILE	VITON	NITRILE	NITRILE
MECHANICAL SEAL	CARBON / CERAMIC	SiC/SiC	CARBON / CERAMIC	CARBON / CERAMIC
SEAL FLEXIBLE BELLOWS	NITRILE	VITON	NITRILE	NITRILE
SEAL STATIONARY FACE	CERAMIC	SiC	CERAMIC	CERAMIC
SEAL ROTATING FACE	CARBON	SiC	CARBON	CARBON
SEAL SPRING	STAINLESS STEEL	STAINLESS STEEL	STAINLESS STEEL	STAINLESS STEEL
NUTS & TAILS / CAPS	ALUMINIUM	POLYPROPYLENE	POLYPROPYLENE	N/A

TECHNICAL DATA

MODEL	PART NUMBER	HP NOMINAL	ENGINE MODEL	SUCTION	DISCHARGE	OPTIONS
HIGH VOLUME - HONDA						
TORRENTMASTER	OTM1000	6.5	HONDA GX200	3"	3"	ES- R
CHEMICAL TRANSFER - HONDA						
HTP750VR	HTP750VR	6.5	GX200	2"	2"	
HTP1600V	HTP1600V	13	GX390	3"	3"	
MINIBLAZE TRANSFER - LONCIN						
MB25L	MB25L	2.5	148F-2F	1"(M)	1"(M)	K
JET ASSISTED - HONDA						
OJ700E	110075	5.5	HONDA GX160	1½"(F)	1"(F)	
OJ800E	110160	9	HONDA GX270	1½"(F)	1"(F)	
OJ800ES	110161	9	HONDA GX270ES	1½"(F)	1"(F)	ES
JET ASSISTED - YANMAR						
OJ800ES	110169	7	YANMAR L70AE	1½"(F)	1"(F)	ES

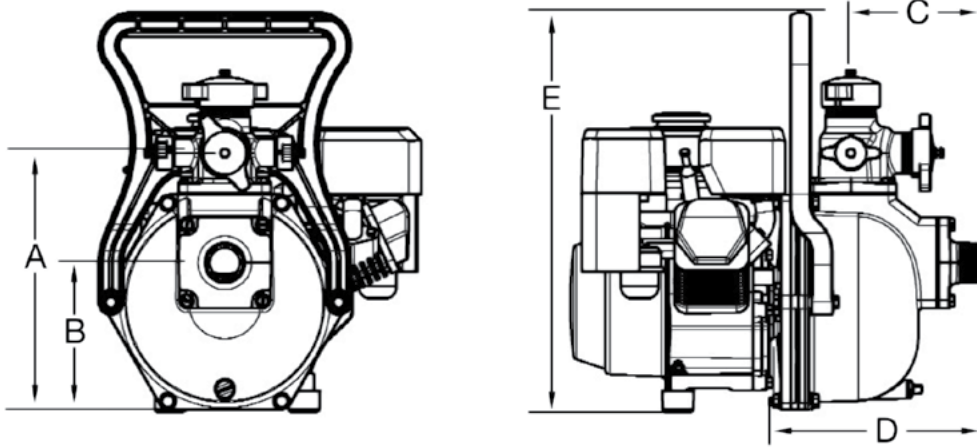
*OPTIONAL EXTRAS: **K** - Hose kit **ES** - Electric start **R** - Roll frame **V** - Viton

Note: For technical information on the engines, contact engine manufacturer.

TECHNICAL ENGINE DRIVE

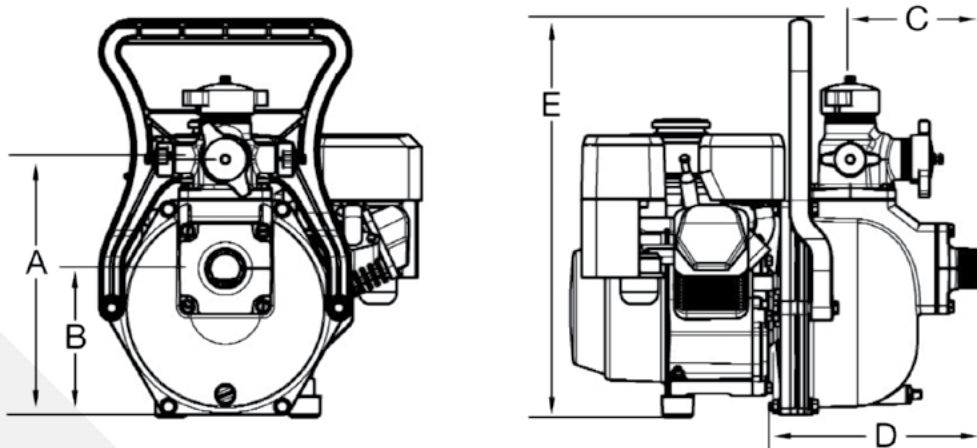
DIMENSIONAL DRAWINGS

BLAZEMASTER SINGLE IMPELLER



MODEL	ENGINE MAKE	ENGINE HP	A	B	C	D	E	PUMP WEIGHT (KG)
B55H	HONDA GX160	5.5 HP	312	178	166	253	480	22.2
B65H	HONDA GX200	6.5 HP	312	178	166	253	480	23.2
B48Y	YANMAR L48AE	4.8 HP	320	185	166	271	180	31.2
B70YE	YANMAR L70AE	7.0 HP E/S	327	193	166	271	495	45.2
B10YE	YANMAR L100AE	10.0 HP E/S	337	203	166	271	505	60.2

BLAZEMASTER TWIN IMPELLER



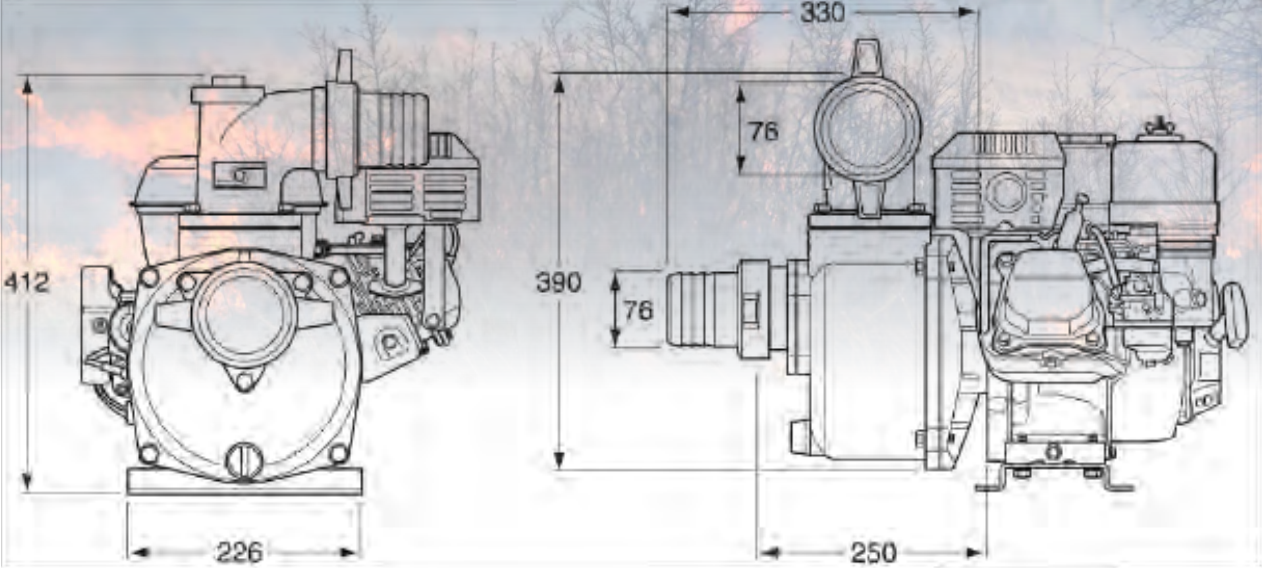
MODEL	ENGINE MAKE	ENGINE HP	A	B	C	D	E	PUMP WEIGHT (KG)
BM55H	HONDA GX160	5.5 HP	312	178	166	253	480	22.2
BM65H	HONDA GX200	6.5 HP	312	178	166	253	480	23.9
BM90H	HONDA GX270	9.0 HP	316	182	166	271	484	33.1
BM70YE	YANMAR L70AE	7.0 HP E/S	327	193	166	271	495	46.1
BM10YE	YANMAR L100AE	10.0 HP E/S	337	203	166	271	505	61.1

Note: Unless otherwise specified, all dimension in mm.

TECHNICAL ENGINE DRIVE

DIMENSIONAL DRAWINGS

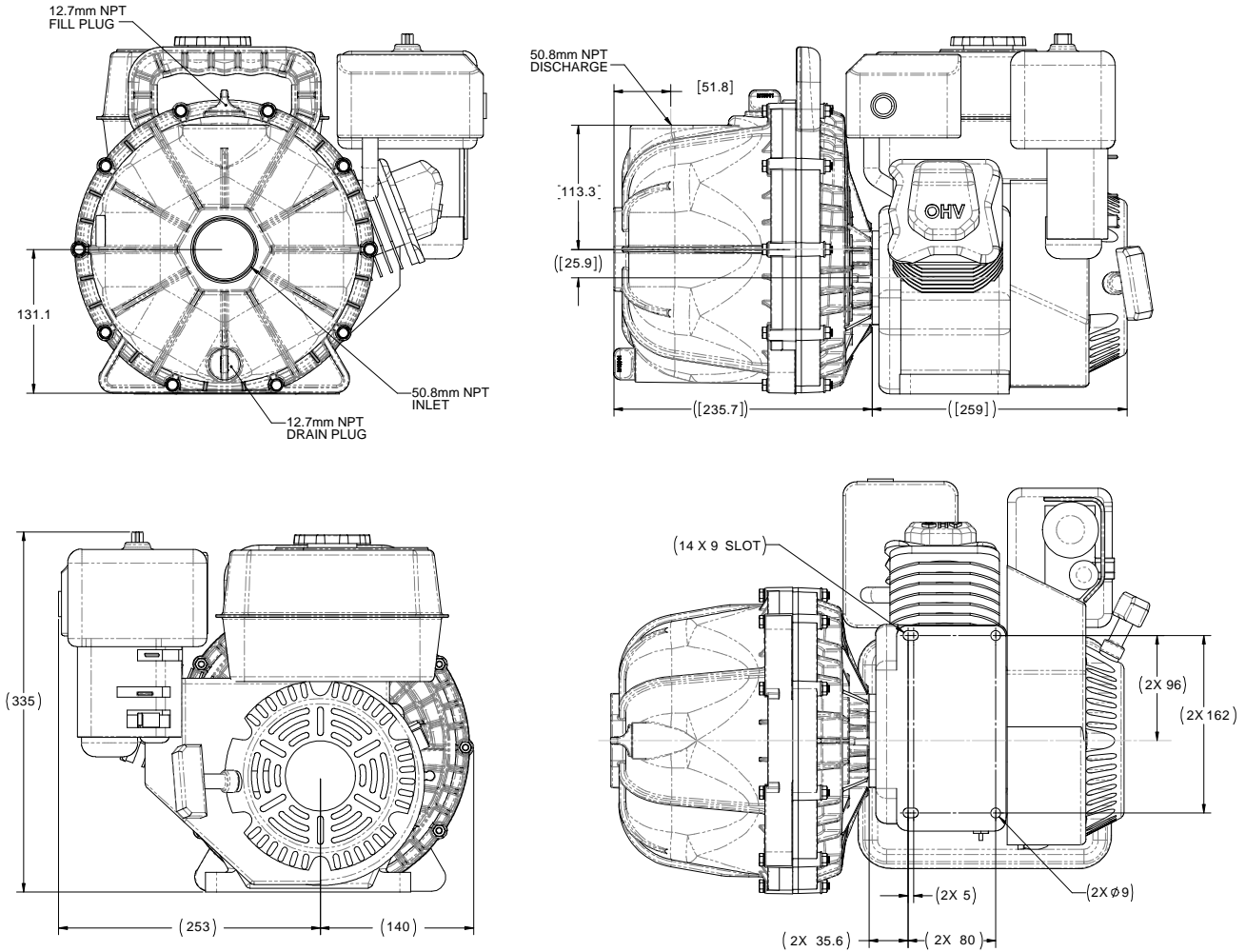
TORRENTMASTER



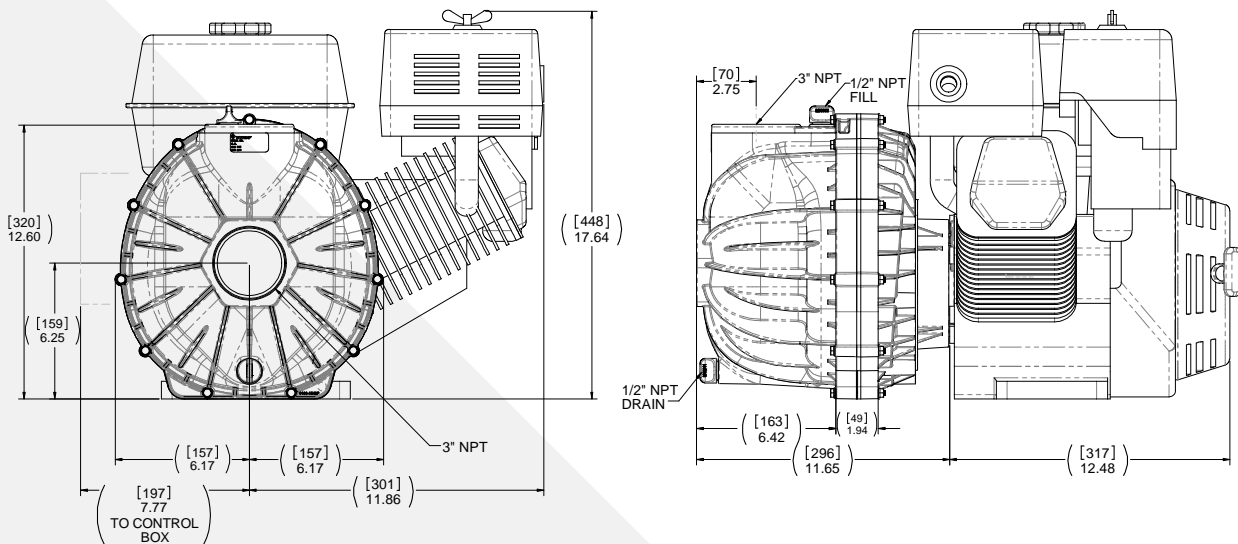
TECHNICAL ENGINE DRIVE

DIMENSIONAL DRAWINGS

HTP750



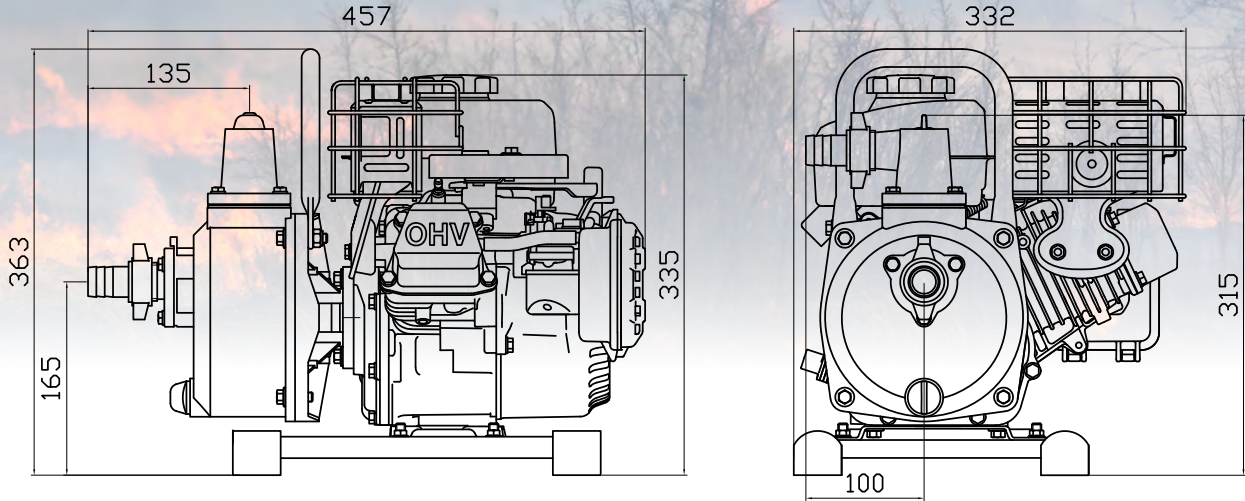
HTP1600V



TECHNICAL ENGINE DRIVE

DIMENSIONAL DRAWINGS

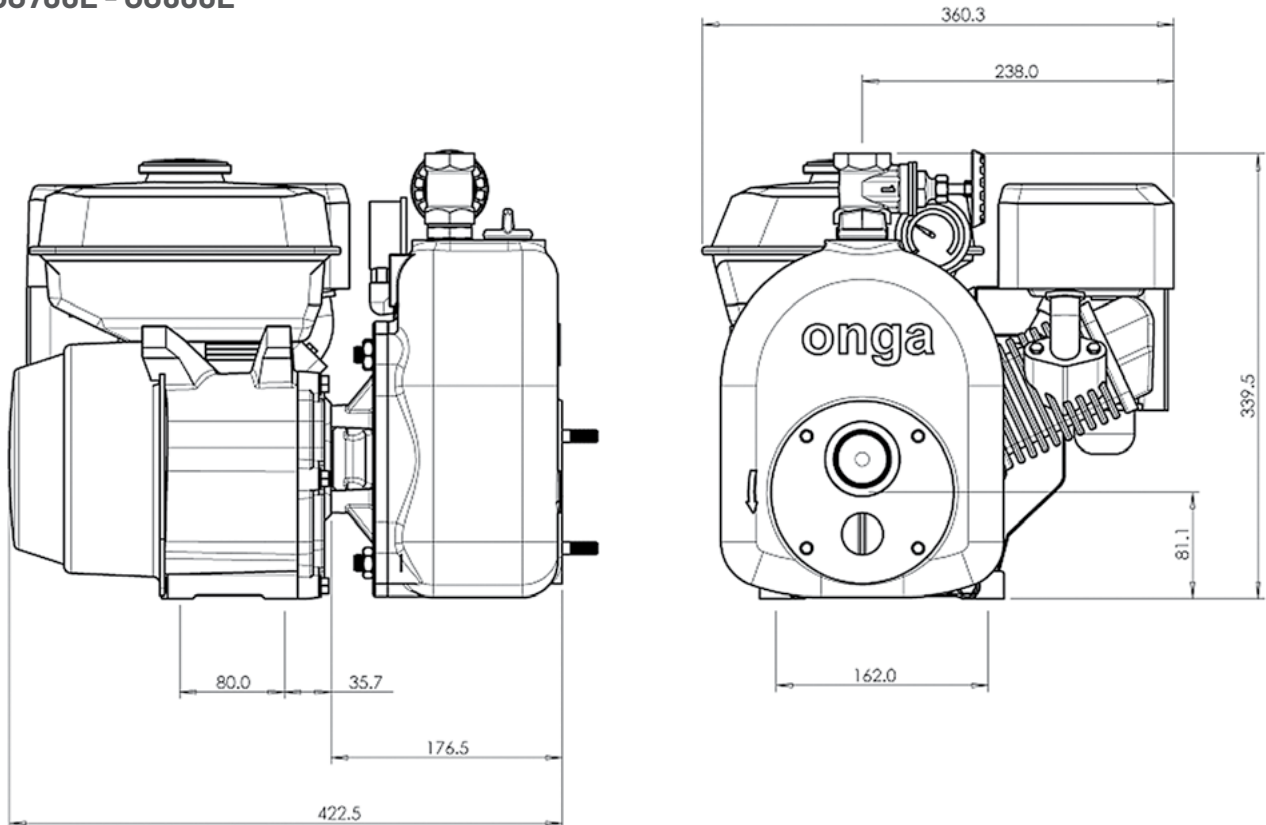
MB25L



DIMENSIONS

TYPE	PUMP L X W X H	WEIGHT APPROX.	INLET	OUTLETS	PACKED L X W X H	PACKED WEIGHT
MB25L	427 x 332 x 363 mm	13.5kg	1" BSP (male)	1" BSP (male)	445 x 340 x 365 mm	15kg

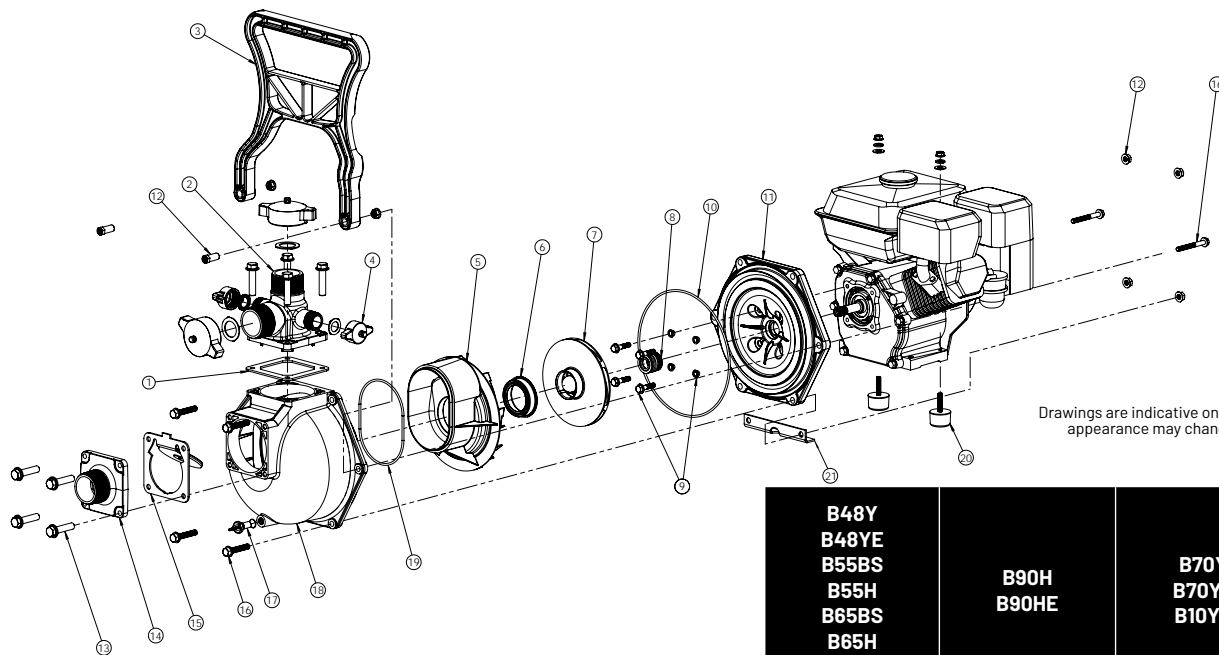
OJ700E - OJ800E



SPARE PARTS

BLAZEMASTER SINGLE

B48Y, B48YE, B55BS, B55H, B65BS, B65H, B65HE, B90H, B90HE, B70Y, B70YE & B10YE



Drawings are indicative only, product appearance may change slightly.

REF NO.	COMPONENT DESCRIPTION	B48Y B48YE B55BS B55H B65BS B65H B65HE		B90H B90HE		B70Y B70YE B10YE	
		PART NO.	PART NO.	PART NO.	PART NO.	PART NO.	PART NO.
1	GASKET - DISCHARGE	510960K	1PC	510960K	1PC	510960K	1PC
2	FLANGE - DISCHARGE 1½" BSP	410933G	1PC	-	-	-	-
	FLANGE - DISCHARGE 2" BSP	-	-	410943G	1PC	410943G	1PC
3	HANDLE	305590	1PC	-	-	-	-
4	CAP & WASHER 1"BSP	800111	2PC	800111	2PC	800111	2PC
	CAP & WASHER 1½"BSP	800112	2PC	-	-	-	-
	CAP & WASHER 2" BSP	800382	2PC	800382	2PC	800382	2PC
5	DIFFUSER	411420	1PC	411420	1PC	411420	AR
6	WEAR RING	510970K	1PC	510980K	1PC	510980K	1PC
7	IMPELLER- 5/8" SHAFT	511070K	1PC	-	-	-	-
	IMPELLER - 1" SHAFT	-	-	511210K	1PC	511210K	1PC
8	MECHANICAL SEAL	801428	1PC	700274K	1PC	700274K	1PC
	OVERHAUL KIT (1,4,8,10,15 &19)	801244	1PC	801244	1PC	-	-
	VITON SEAL & O-RING KIT	801364K	1PC	801365K	1PC	801365K	1PC
9	BOLT & SEAL KIT (PK/12)	800273K	1PC	800273K	1PC	800273K	2PC
10	O-RING CASING	702216K	1PC	702216K	1PC	702216K	1PC
11	YOKE ¾" BLAZEMASTER	305494G	1PC	-	-	-	-
	YOKE 1" BLAZEMASTER	-	-	305503G	1PC	305503G	1PC
12	NUTS - CASING (PK/12)	800092K	6PC	800092K	6PC	800092K	1PC
13	SCREW M8 (PK/8)	702771K	8PC	702771K	8PC	702771K	8PC
14	FLANGE - SUCTION 1½" BSP (5.5HP)	410853G	1PC	-	-	-	-
	FLANGE - SUCTION 2" BSP (>6.5HP)	410863G	1PC	410863G	1PC	410863G	1PC
15	GASKET - CLACKER ASSY.	511150K	1PC	511150K	1PC	511150K	1PC
16	CASING BOLTS	800380	1PC	800380	1PC	800380	1PC
17	PLUG ¼" DRAIN (INC. O-RING)	800222	1PC	800222	1PC	800222	1PC
18	CASING	305483G	1PC	305483G	1PC	305483G	1PC
19	O-RING DIFFUSER	705901K	1PC	705901K	1PC	705901K	1PC
20	ANTI VIVRATION FEET (SET/2)	801356K	1PC	-	-	-	-
21	BRACKET SUPPORT	608960	1PC	-	-	-	-
NS	ROLL FRAME (SMALL)	801372K	1PC	-	-	-	-

SPARE PARTS

BLAZEMASTER TWIN

BM55BS, BM55H, BM65BS, BM65H, BM65HE, BM80BSE, BM90H, BM90HE, BM10BSE, BM70Y, BM70YE & BM10YE



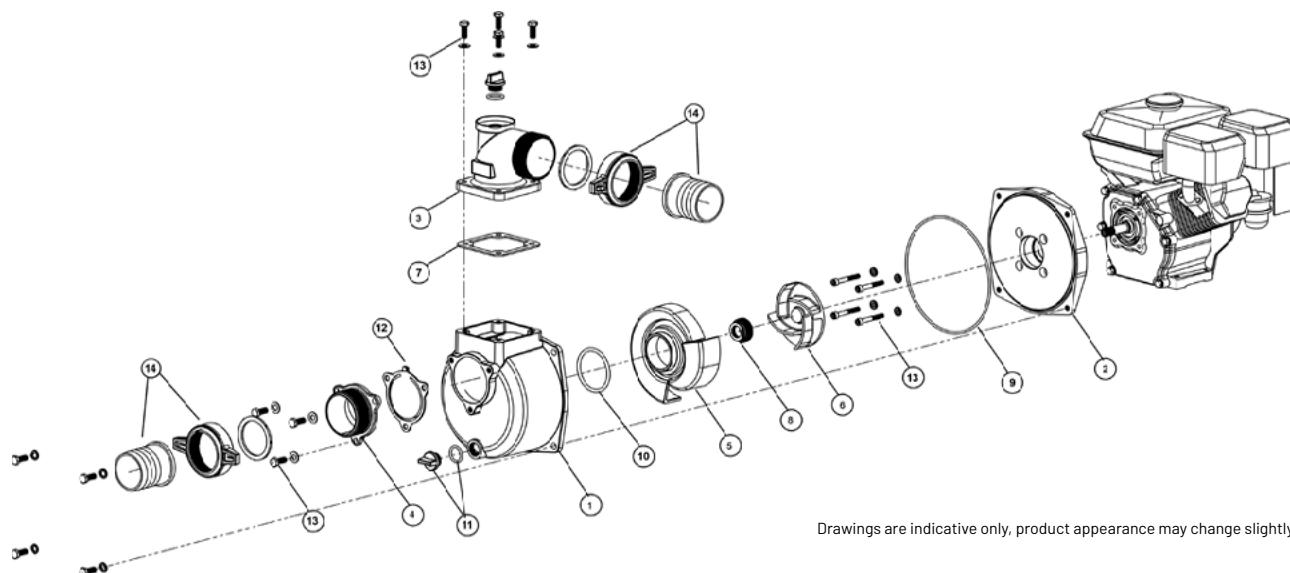
Drawings are indicative only, product appearance may change slightly.

REF NO.	COMPONENT DESCRIPTION	BM55BS BM55H BM65BS BM65H BM65HE		BM80BSE BM90H BM90HE BM10BSE		BM70Y BM70YE BM10YE	
		PART NO.	PART NO.	PART NO.	PART NO.		
1	GASKET - DISCHARGE	510960K	1PC	510960K	1PC	510960K	1PC
2	FLANGE - DISCHARGE 1½" BSP	410933S	1PC	-	-	-	-
	FLANGE - DISCHARGE 2" BSP	-	-	410943S	1PC	410943S	1PC
3	HANDLE	305590	1PC	-	-	-	-
NS	NUT - BUSH HANDLE	609010K	1PC	-	-	-	-
4	CAP & WASHER 1" BSP	800111	2PC	800111	2PC	800111	2PC
	CAP & WASHER 1½" BSP	800112	1PC	-	-	-	-
	CAP & WASHER 2" BSP	800382	1PC	800382	1PC	800382	1PC
5	DIFFUSER - INTERSTAGE	305538	1PC	305538	1PC	305538	1PC
6	O-RING DIFFUSER - INTERSTAGE	702261K	1PC	702261K	1PC	702261K	1PC
7	DIFFUSER - 2ND STAGE	305515	1PC	305515	1PC	305515	1PC
8	SUCTION COVER	305555	1PC	305555	1PC	305555	1PC
9	WEAR RING	510970K	2PC	510980K	2PC	510980K	2PC
10	IMPELLER - 5/8" SHAFT	511050K	2PC	-	-	-	-
	IMPELLER - 1" SHAFT	-	-	511060K	2PC	511060K	2PC
11	IMPELLER - SCREW	801367K	1PC	801367K	1PC	801367K	1PC
	IMPELLER WASHER M10 x 30	801367K	1PC	801367K	1PC	801367K	1PC
	IMPELLER WASHER M10 x 40	-	-	801367K	1PC	801367K	1PC
13	WASHER SPRING - IMPELLER	801367K	1PC	801367K	1PC	801367K	1PC
NS	OVERHAUL KIT ¾" (1, 6, 14, 25, 26 & 28)	801244	1PC	-	-	-	-
14	MECHANICAL SEAL KIT	801428	1PC	700274K	1PC	700274K	1PC
NS	VITON SEAL KIT ¾"	801364K	1PC	-	-	-	-
	VITON SEAL KIT 1"	-	-	801365K	1PC	801365K	1PC
15	SPACER SLEEVE 5/8" & ¾" SHAFT	608770K	1PC	-	-	-	-
	SPACER SLEEVE 1" SHAFT	-	-	608780K	1PC	608780K	1PC
16	STUB SHAFT 5/8"	608930K	1PC	-	-	-	-
	STUB SHAFT 1"	-	-	608950K	1PC	608950K	1PC
17	BOLT & SEAL KIT (Set/12)	800273K	1PC	800273K	1PC	800273K	1PC
18	YOKE ¾" BLAZEMASTER	305494S	1PC	-	-	-	-
	YOKE 1" BLAZEMASTER	-	-	305503S	1PC	305503S	1PC
19	NUTS - CASING	800092K	6PC	800092K	6PC	800092K	6PC
20	SCREW (PK/6) M8	702771K	1PC	702771K	1PC	702771K	1PC
21	FLANGE - SUCTION 1½" BSP	410853S	1PC	-	-	-	-
	FLANGE - SUCTION 2" BSP	-	-	410863S	1PC	410863S	1PC
22	BOLTS - CASING	800380	6PC	800380	6PC	800380	6PC
23	PLUG ¼" DRAIN (INC. O-RING)	800222	1PC	800222	1PC	800222	1PC
24	CASING	305483S	1PC	305483S	1PC	305483S	1PC
25	CASING O-RING	702806	2PC	-	-	-	-
26	O-RING SUCTION COVER	705901K	1PC	705901K	1PC	705901K	1PC
27	ANTI VIBRATION FEET (SET/2)	801356K	1PC	801356K	1PC	801356K	1PC
28	GASKET - CLACKER ASSY.	511150K	1PC	511150K	1PC	511150K	1PC
29	BRACKET SUPPORT	608960	1PC	608460	1PC	-	-

SPARE PARTS

TORRENTMASTER

OTM1000 & OTM1000E

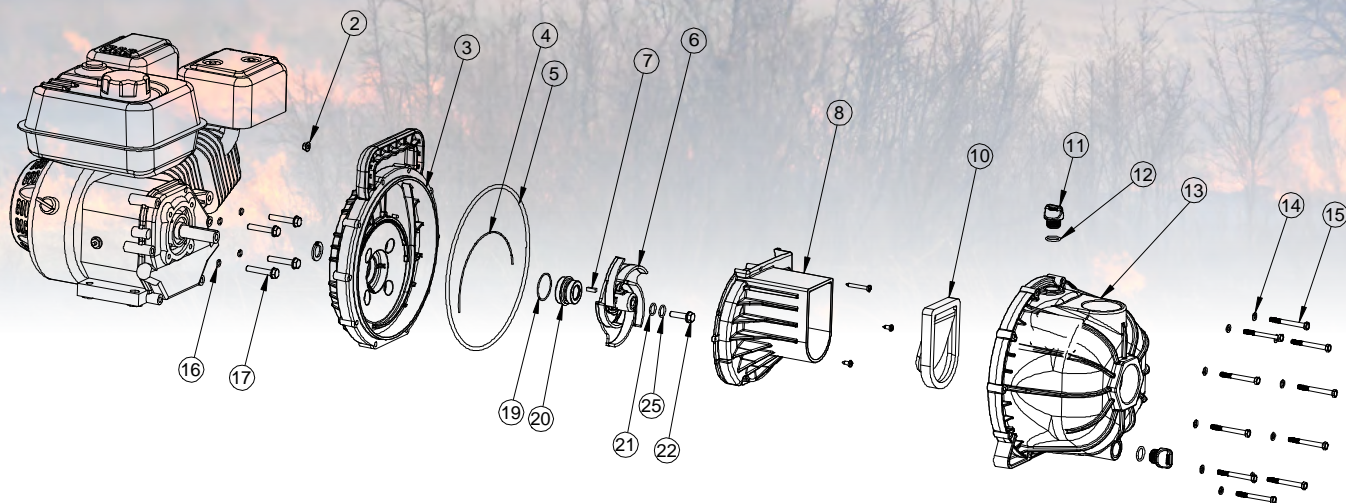


		TM1000 TM1000E
REF NO.	COMPONENT DESCRIPTION	PART NO.
1 & 9	CASING KIT	707698K
2, 13 & 9	YOKE & BOLTS KIT	707699K
8, 6, 5 & 10	IMPELLER & DIFFUSER KIT (WITH IMPELLER BOLT & MECHANICAL SEAL)	707700K
11, 12, 10, 7, 8 & 9	SEAL KIT	707701K
14	NUT & TAIL KIT (INC HOSE CLIP)	707702K
13, 4 & 12	SUCTION KIT	707703K
3, 7 & 13	DISCHARGE FLANGE KIT	707704K

SPARE PARTS

CHEMICAL TRANSFER

HTP750VR



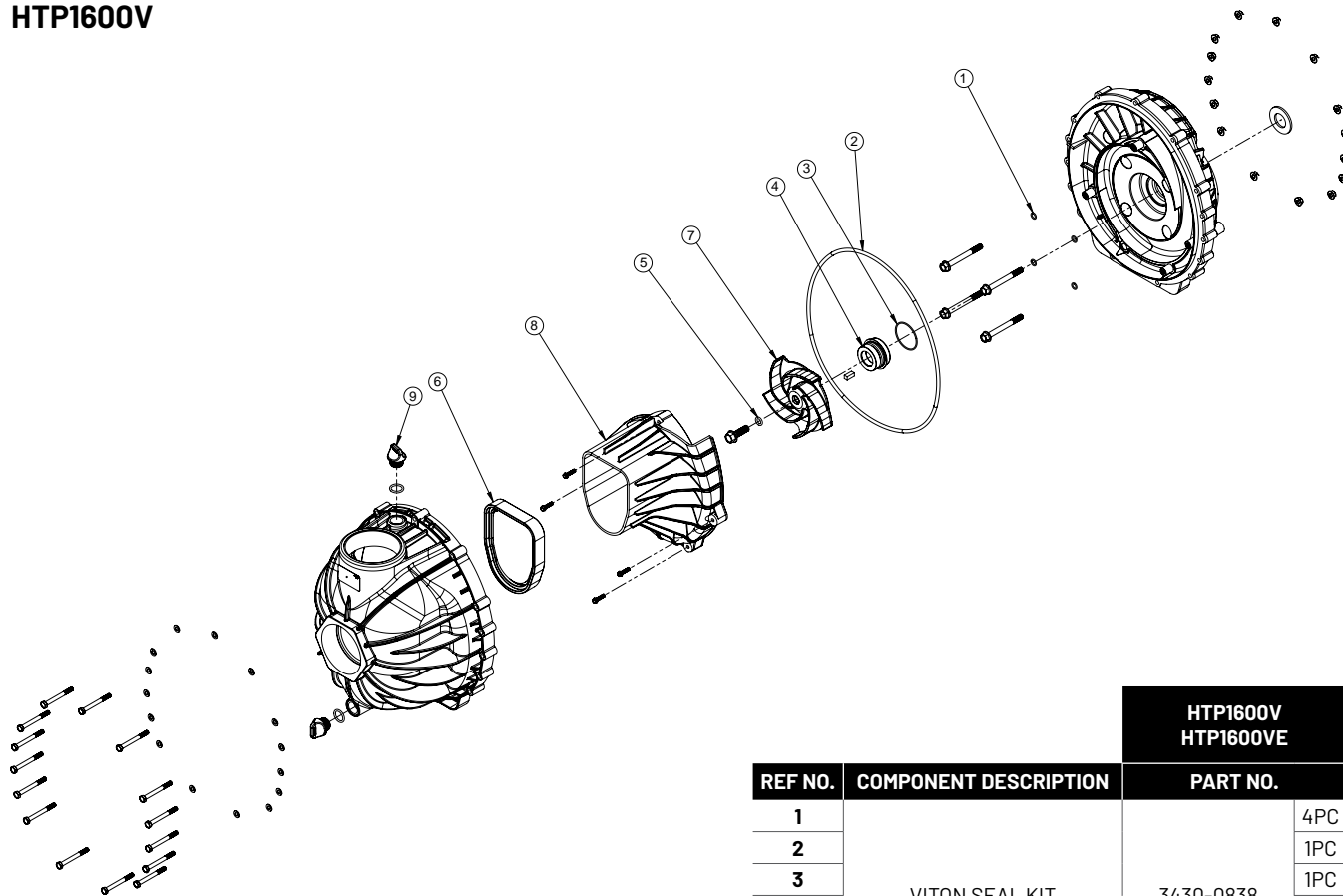
Drawings are indicative only, product appearance may change slightly.

			HTP750VR
REF NO.	KIT DESCRIPTION	COMPONENT DESCRIPTION	PART NO.
15	CASING BOLT KIT	CASING BOLT	810964
14		CASING WASHER	
2		CASING NUT	
17	YOKE BOLT KIT	YOKE BOLT	810965
16		O'RING - VITON	
3	YOKE	YOKE	810966
20	MECH SEAL KIT VITON	MECHANICAL SEAL VITON	810967
19	IMPELLER KIT	O'RING - VITON	810968
21,16,22,25		IMPELLER BOLT, WASHER, O'RING	
6a		5 VANE IMPELLER	
7		KEY	
5	VITON O'RING KIT	CASING O'RING - VITON	810969
4		DIFFUSER O'RING - VITON	
12		PRIMING/DRAIN PLUG O'RING - VITON	
17		YOKE BOLT O'RING - VITON	
10	VITON CHECK VALVE	CHECK VALVE - VITON	810970
8	DIFFUSER	DIFFUSER	810971
13	PUMP HOUSING	CASING	810972
11	PRIMING PLUG WITH O'RING	PRIMING/DRAIN PLUG	810973
12		PRIMING/DRAIN PLUG O'RING - VITON	

SPARE PARTS

CHEMICAL TRANSFER

HTP1600V



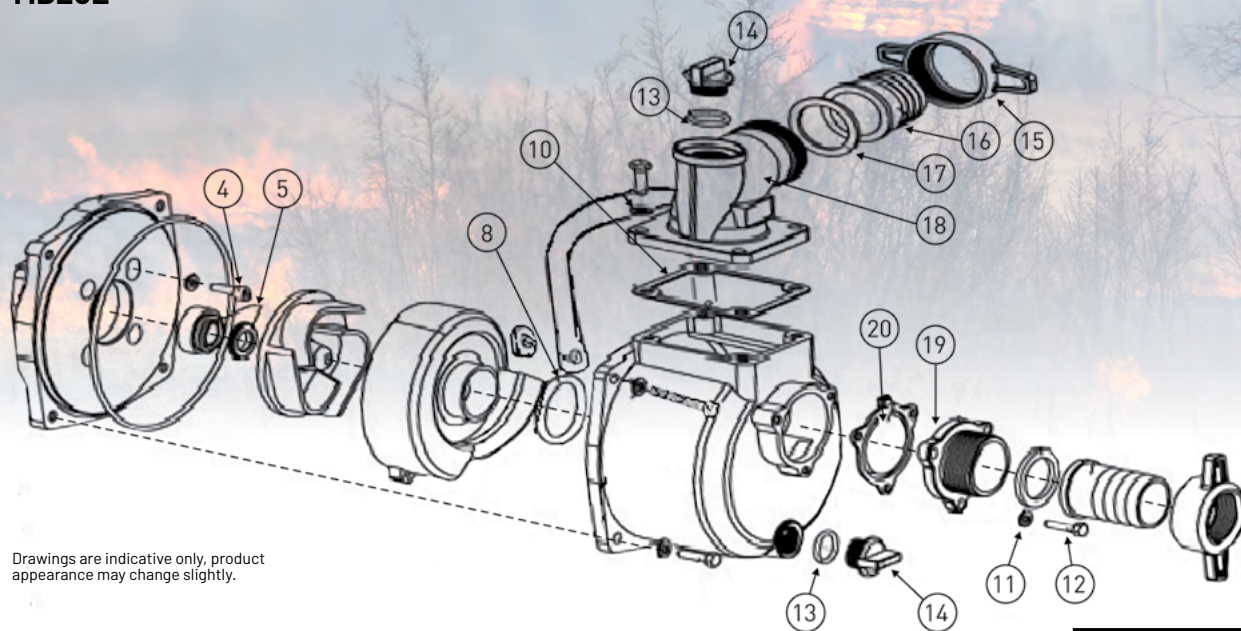
Drawings are indicative only, product appearance may change slightly.

		HTP1600V HTP1600VE	
REF NO.	COMPONENT DESCRIPTION	PART NO.	
1			4PC
2			1PC
3	VITON SEAL KIT	3430-0838	1PC
4			1PC
5			1PC
6			1PC
8			DIFFUSER
7	IMPELLER	0400-1543P	1PC
9	DRAIN/PRIMING PLUG	2404-0350P	1PC

SPARE PARTS

MINIBLAZE

MB25L



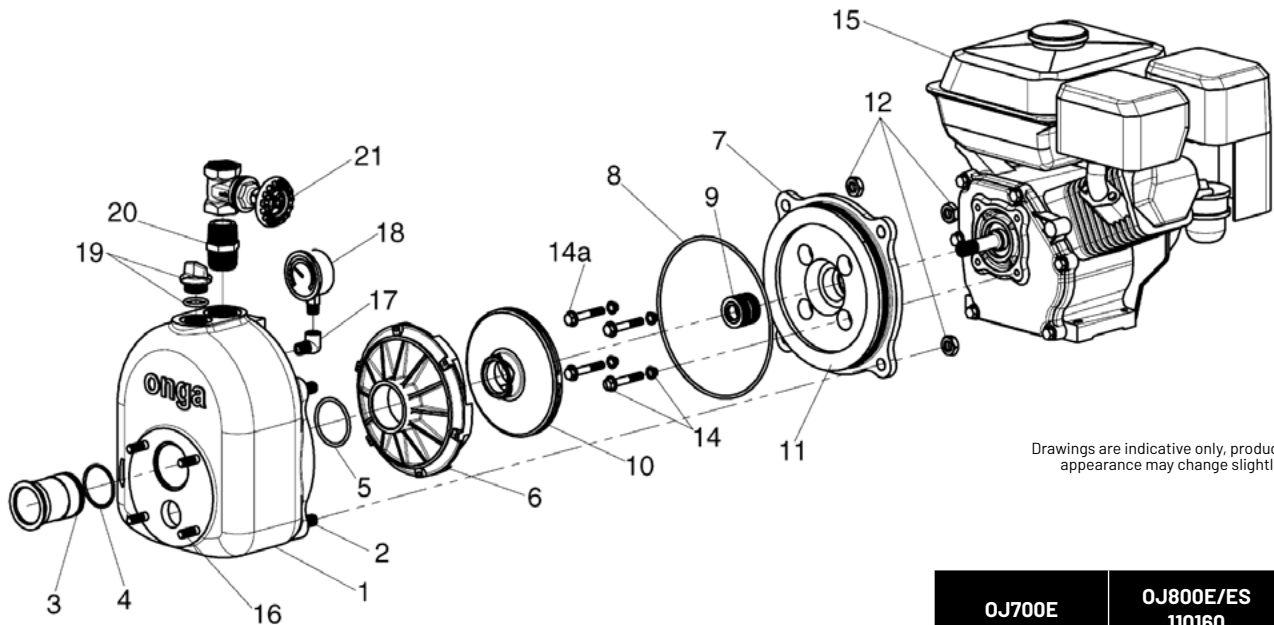
Drawings are indicative only, product appearance may change slightly.

		MB25L	
REF NO.	COMPONENT DESCRIPTION	PART NO.	
8	O'RING DIFFUSER	SEAL & O'RING KIT 707558	1PC
5	MECHANICAL SEAL		1PC
2	O'RING		1PC
10	FLANGE OUTPUT		1PC
	13		2PC
20	CHECK VALVE		1PC
10	FLANGE OUTPUT	SUCTION & DISCHARGE KIT 707559	6PC
13	O'RING		6PC
14	PLUG		6PC
18	FLANGE OUTPUT		4PC
19	FLANGE ENDURE PRESS		1PC
20	CHECK VALVE		1PC
NS	AIR CLEANER ASSEMBLY	180020323-T010	1PC
	IF AFTER 2020	180020871-0001	
NS	CARBURETOR	170020440-T010	1PC
NS	IGNITION ASSEMBLY	270920171-T010	1PC
NS	RECOIL START & FAN COVER	193490001-T010	1PC
NS	WET END KIT COMPLETE	660180028-T850	1PC

SPARE PARTS

OJ SERIES

OJ700E, OJ800E & OJ800ES



Drawings are indicative only, product appearance may change slightly.

REF NO.	COMPONENT DESCRIPTION	OJ700E 110075		OJ800E/ES 110160 110161	
		PART NO.	PART NO.	PART NO.	PART NO.
1	CASING & STUDS ASSY.	800080	1PC	800080	1PC
2	CASING STUD (PK 10)	800113	4PC	800113	4PC
3	SPIGOT	507011	1PC	507011	1PC
4	ORING SPIGOT (PK 5)	702210K	1PC	702210K	1PC
5	O'RING DIFFUSER (PK 5)	700219K	1PC	700219K	1PC
6	DIFFUSER	301431K	1PC	401580K	1PC
7	YOKE	301270GN	1PC	301270GN	1PC
8	O'RING CASING	702165K	1PC	702165K	1PC
9	SEAL	801428	1PC	702617	1PC
	SEAL (PK 25)	800890K	1PC	-	-
10	IMPELLER	503690	1PC	505484	1PC
11	BAFFLE	401322	1PC	401323	1PC
12	NUT (PK 12)	800093K	4PC	800093K	4PC
14	BOLT - HONDA GX160 (PK 12)	800273K	4PC	-	-
16	STUDS (PK 12)	800114	4PC	800114	4PC
17	ELBOW	700032	1PC	700032	1PC
18	PRESSURE GAUGE	700240	1PC	700240	1PC
19	PRIMING PLUG & ORING	800017K	1PC	800017K	1PC
20	NIPPLE	502291	1PC	502291	1PC
21	GATE VALVE	500490K	1PC	500490K	1PC



PENTAIR.COM.AU



1-21 Monash Drive,
Dandenong South, Vic 3175

Australia

National Customer Service: Phone: 1300 137 344
Fax: 1800 006 688
National Dealer Locator: Phone: 1800 664 266
Email: au.sales@pentair.com
Web: pentair.com.au

International Australia

Phone: +61 3 9709 5800
Fax: +61 3 9709 5888

© Information contained here-in remains the property of Pentair under Australian copyrights law.
Any reproduction, display, publication, modification or distribution is strictly prohibited without the prior written permission of Pentair.

Disclaimer: Pentair reserves the right to change product specifications and products details.
All product images are for reference purposes only and may not represent actual and/or current product.

All indicated Pentair trademarks and logos are property of Pentair. Third party registered and unregistered trademarks and logos are the property of their respective owners.

© 2023 Pentair. All rights reserved.