

# U3 KS SPECIAL

## DRAINAGE PUMP

- For saline solutions up to 15% salinity
- Cooling jacket for motor housing
- Low level pumping by detachable strainer base
- Flushing device activatable and deactivatable
- Variable discharge branch with closable ventilation
- Run dry protection
- EIP Technology
- SiC mechanical seal
- Moisture sealed cable inlet
- Fluid temperature 35 °C, temporarily 60 °C (10 min.)



### DESCRIPTION

The U3 KS special is a variant of the U3 KS designed to pump aggressive media such as brine from water softeners, brackish water, condensate from gas condensing boilers, silage liquid, whey or liquid fertiliser.

Residential greywater from dishwashers or washing machines (even boil wash program) or outdoor applications like drainage or rainwater can easily be handled by this pump.

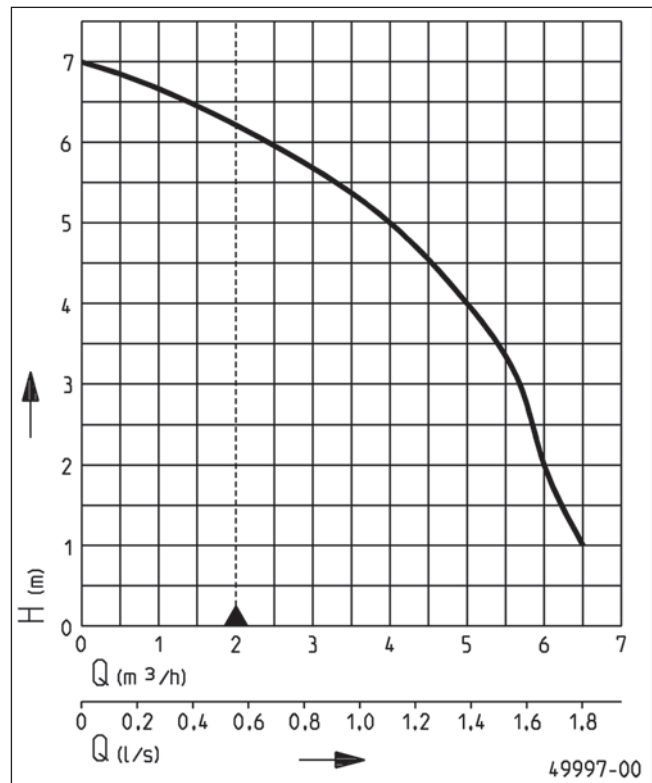
Depending on the application it can be used either in a fixed installation or as a mobile pump. For fixed installations the pump can be combined with existing sumps or the Hebefix tank.

Aggressive media are not precisely specified and occur in countless different compositions. In order to provide reliability and warranty, please contact our technical support for consultancy.

The U3 KS special provides the same technical features as the standard model U3 KS. Guide rail systems offer the advantages of quick and easy maintenance.

Despite its high range of possible applications, the U3 KS special must not be used to pump effluent containing faeces or wastewater from urinal systems.

### PERFORMANCE



Type	Delivery head H [m]	1	2	3	4	5	6
U3 KS special	Flow rate Q [m³/h]	6.5	6.0	5.7	5.0	4.0	2.4

We reserve the right to change specifications without notice. Pump performance is subject to ISO 9906 tolerances. This data is represented in the performance curve as a limit of application.

# U3 KS SPECIAL

## DRAINAGE PUMP

### SCOPE OF SUPPLY

Pump ready for connection with 90° 1/4" female connection elbow with integrated self-ventilation, cable and plug, and automatic level float switch.

### MECHANICAL DATA

Pump	Vertical single-stage
Free passage	10 mm
Bearing	Ball bearings, grease-lubricated
Seal on motor side	Rotary shaft seal
Oil chamber	Yes
Seal on medium side	SiC mechanical seal
Run dry protection	Yes

Shaft	Stainless steel
Impeller	Vortex impeller, GFK
Motor housing	Stainless steel
Pump housing	GRP
Submersible	Yes
Pressure outlet	1 1/4" MI

### ELECTRICAL DATA

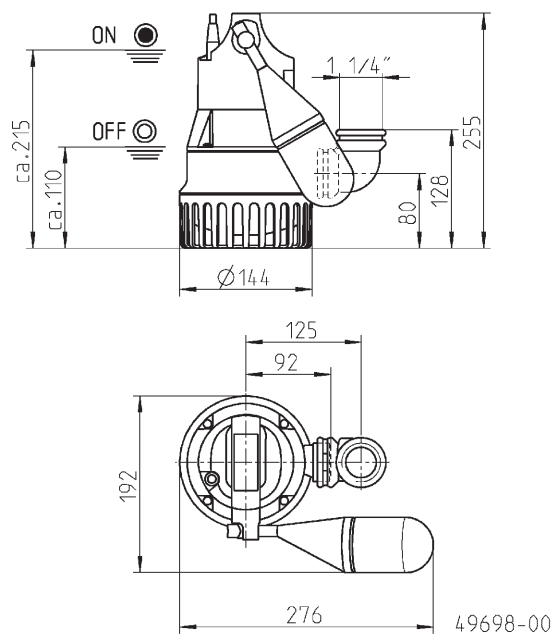
Voltage	1/N/PE~230 V
Motor rating P1	0.32 kW
Motor rating P2	0.22 kW
Current	1.4 A
Wires	3G1,0

Type of enclosure	IP 68
Insulation class	B
Winding thermostat	Yes
Motor protection	Integrated
Plug	3 flat-pin ANZ

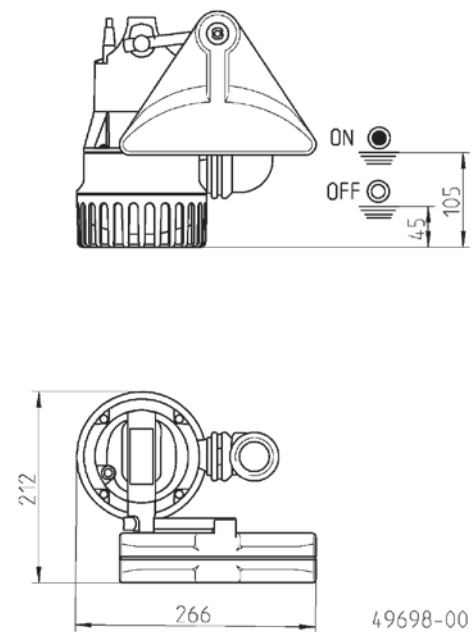
### U3 SPECIAL

Type	Code No.	Power line	Weight
<b>With built-in level control</b>			
U3 KS special, 10 m cable	<b>JP50023</b>	10m H07RN-F	4.4 kg

### Dimensions and switching points U3 KS spec. (mm)



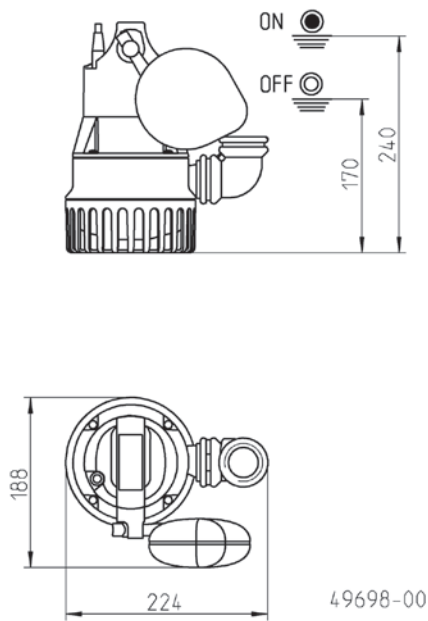
### Dimensions and switching points special float (mm)



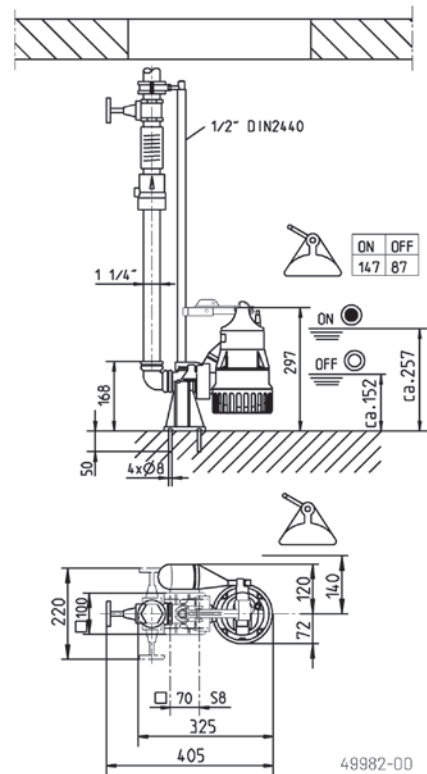
# U3 KS SPECIAL

DRAINAGE PUMP

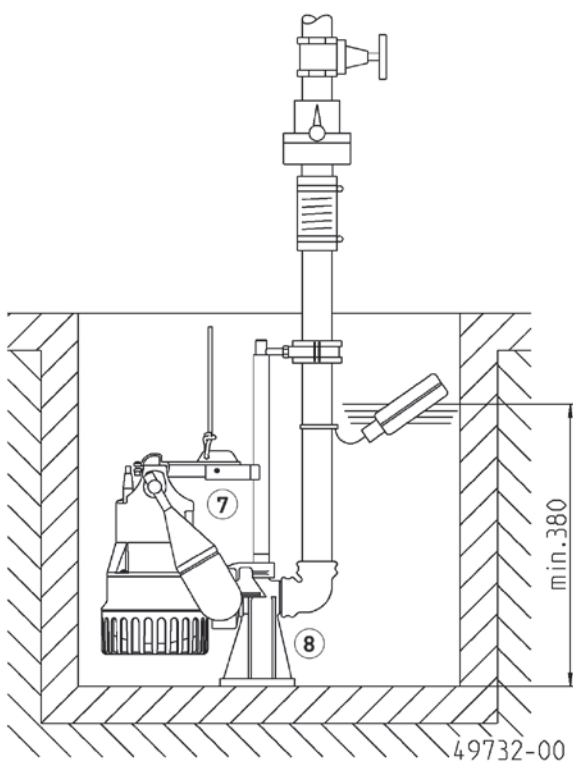
## Dimensions and switching points special float (mm)



## Dimensions GR (mm)



## Example of single pump installation with GR



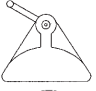


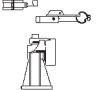
Single unit with GR: sump area min. 40x50 cm or Ø 50 cm  
Single unit without GR: sump area min. 40x40 cm or Ø 40 cm

# U3 KS SPECIAL

## DRAINAGE PUMP

---

### MECHANICAL ACCESSORY

			Code No.
	<b>7 Special float</b>	for lower switching points	<b>JP44795</b>
		for narrow chambers (mind. 30x30 od Ø30 cm)	<b>JP40856</b>
	Float fixation	for continuous pump operation	<b>JP42175</b>
	<b>8 Guide rail system</b>	GR 32	<b>JP44000</b>