

# US 73 HE-US 103 HE

## SUBMERSIBLE DRAINAGE PUMP FOR HOT WATER OPERATION

- Safe to run dry
- 30 mm free passage
- Hot water up to 90 °C
- Controllable oil chamber
- SiC mechanical seal
- Replaceable moisture sealed cable inlet

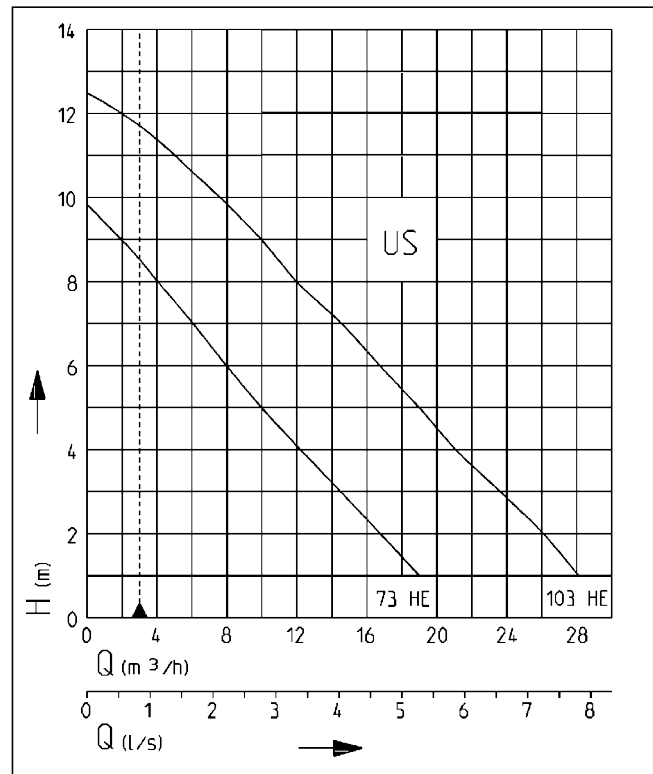


### DESCRIPTION

The heavy duty centrifugal submersible drainage pumps US 73 and 103 HES are suitable for dealing with contaminated water and capable of handling solids up to 30 mm particle size without stones. These pumps can be used wherever wastewater up to 90°C is involved, such as in laundries or automatic laundrettes, or in industrial dishwashers and washing machines or for the emergency overflow of heating systems.

This range of pumps is suitable for stationary use. For easy removal of the pumps from deep sumps we recommend the use of our guide rail systems which provide ease of maintenance and inspection. A controllable oil chamber and wear-resistant mechanical seal ensure a long service life. The integrated winding thermostats protect the motor from overload.

### PERFORMANCE



Type	Delivery head H [m]	1	2	3	4	5	6	7	8	9	10	12
US 73 HES	Flow rate Q [m³/h]	19	17	15	12	10	8	6	4	2		
US 103 HES		28	26	23	21	19	17	15	12	10	8	2

We reserve the right to change specifications without notice. Pump performance is subject to ISO 9906 tolerances

This data is represented in the performance curve as a limit of application.

# US 73 HE-US 103 HE

## SUBMERSIBLE DRAINAGE PUMP FOR HOT WATER OPERATION

### SCOPE OF SUPPLY

Pump ready for connection with 10 m cable. US 73 HE and US 103 HE with 3 flat-pin ANZ plug.

### MECHANICAL DATA

Pump	Vertical single-stage
Free passage	30 mm
Bearing	Ball bearings, grease-lubricated
Seal on motor side	Duplex rotary shaft seals
Oil chamber	Yes
Seal on medium side	SiC mechanical seal
Run dry protection	Yes

Shaft	Stainless steel
Impeller	Vortex impeller, GFK
Motor housing	Stainless steel
Pump housing	Grey cast iron
Submersible	Yes
Pressure outlet	1 1/2" FI

### ELECTRICAL DATA

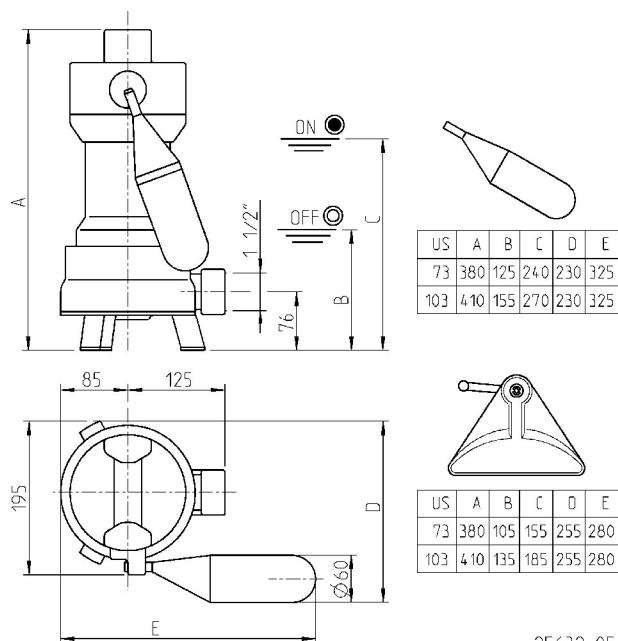
Voltage	1/N/PE~230 V
Power line	10m H07RN-F
Wires	3G1,0
Type of enclosure	IP 68

Insulation class	F
Winding thermostat	Yes
Motor protection	Integrated
Plug	3 flat-pin ANZ

### US 73 HE-US 103 HE

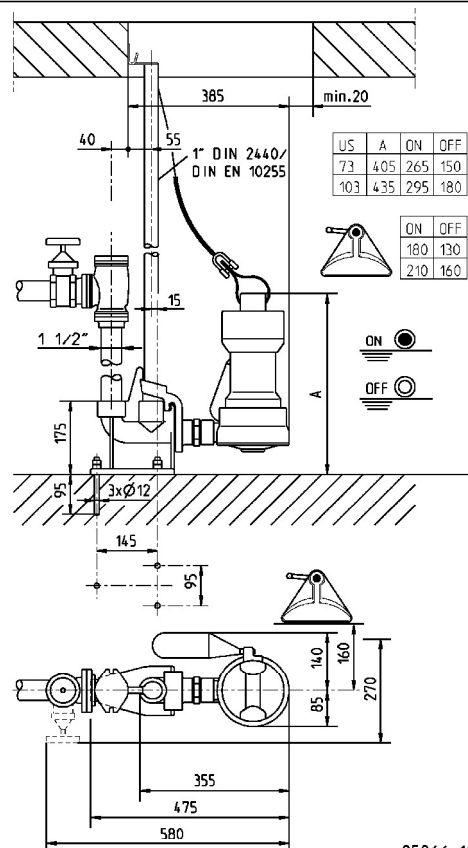
Type	Code No.	Motor rating		Current	Weight
		P1	P2		
<b>With built-in level control</b>					
US 73 HES	JP44086	0.83 kW	0.50 kW	3.9 A	12.5 kg
US 103 HES	JP44326	1.37 kW	0.98 kW	6.0 A	14.1 kg

### Dimensions/switching points US 73 + 103 HES (mm)



25632-05

### Dimensions/switching points US 73+103 HES with GR 40 (mm)

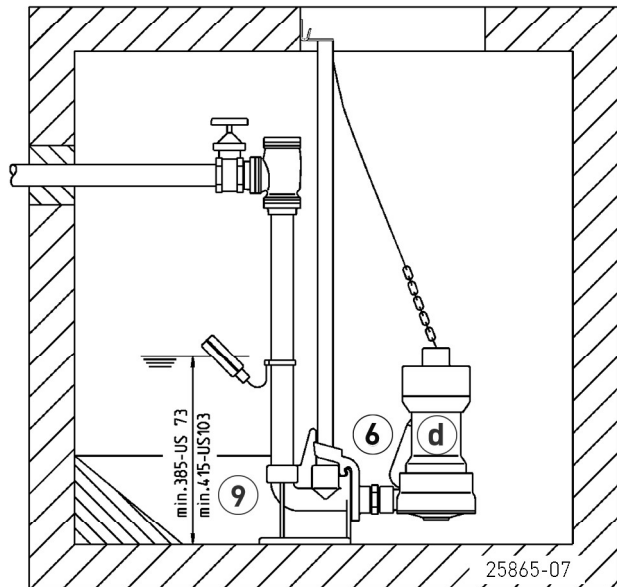


25866-12

# US 73 HE-US 103 HE


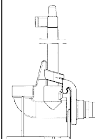
SUBMERSIBLE DRAINAGE PUMP FOR HOT WATER OPERATION

## Example of single pump installation with GR



Single unit US-H with GR 40: sump area min. 40x65 cm  
Single unit US-H without GR: sump area min. 40x40 cm

## MECHANICAL ACCESSORY

			Code No.
	<b>6</b> Special float	for lower switching points	JP44795
	<b>9</b> Guide rail system	GR 40	JP25592